

# TOP OF THE TORRENS

## art gallery newsletter

| November / December 2023 |



**'tis the  
season  
to be jolly...**

### Dates at a glance:

*Current Exhibition:*  
'An Eclectic Mix  
showing until 28th January 2024

*Next General Meeting:*  
10 am Tuesday 16th January 2024  
at the Gallery

*Material for future newsletters  
can be left at the gallery marked:*

**Attention-Rosie Trenergy**  
or emailed to:  
[tott@tottgallery.com.au](mailto:tott@tottgallery.com.au)

*Please type TOTT NEWSLETTER  
in the subject field.*

I was fortunate to attend the opening of our latest TOTT exhibition 'An Eclectic Mix' on Sunday 10th December and to be with so many of our members.

There were at least 40 people who made the decision to be there, even with a weather forecast of torrential rain. We were lucky though with only a few showers throughout the afternoon!

The benefit for me in attending an exhibition opening is the opportunity to mix with the TOTT artists. There are some TOTT members who I still only know by name, so to get the chance to put a face to a name and chat about our common interests is always a wonderful opportunity. It was a great afternoon with the gallery filled with the hum of happy chatter.

The year has almost gone, Christmas is just around the corner and then we will be into 2024. I know that we have a great mix of exhibitions planned for next year and I look forward to catching up with you at some of our exhibition opening events.

Lastly, but most importantly, I wish all our TOTT members, their family and our friends a happy Christmas and a great 2024.

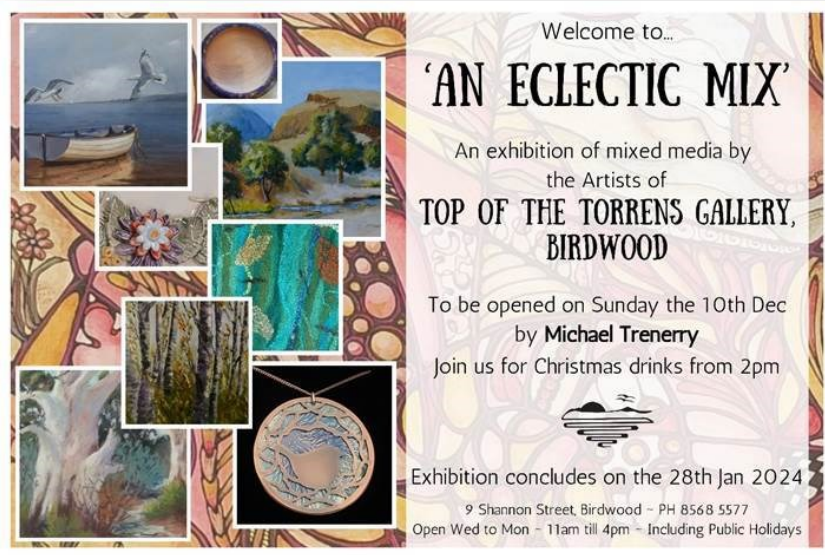
*Regards,*

*John Ragless, TOTT Chairperson*

*Above & at left:*

*Just a few examples from the unique range of Christmas cards & decorations available at the TOTT*





Thirty five TOTT Member Artists are participating in this year's summer members' exhibition and have all responded to the *eclectic* theme with a diverse selection of wonderful artworks.

The display also includes a whimsical assortment of handmade Christmas items.

The exhibition opening was celebrated in conjunction with Christmas drinks on Sunday 10th December. If you weren't able to make the opening you still have many opportunities to do so prior to it concluding on Sunday the 28<sup>th</sup> of January.

In recent years, participation in the TOTT Summer exhibition has been free for members, however at the AGM in September a proposal was put forward to charge members the usual \$20 exhibition fee and then donate these funds to the Cancer Council. This was supported by all present.

Sadly several members of the gallery (or members of their family) have been touched by cancer over the past few years and this is one tangible way that we can show our support.

In opening the exhibition, Michael Trenerry commended participating artists for their exciting, creative work and their valuable support of this most worthwhile of causes.



Above left:  
 Michael Trenerry at the opening of 'An Eclectic Mix'

Above right:  
 TOTT Member artists Joe Dennis, Anna McKenzie & Ann Beacham enjoying the opportunity to relax and share in some festive cheer

## **Participating Artists**

*include:*

Jill Allanson  
 Jenny Anderson  
 Peter Austin  
 Ann Beacham  
 Adrian Beacham  
 Tori Bedford  
 Marg Benkis  
 Karina Cuttle  
 Annette Dawson  
 Talia Dawson  
 Joe Dennis  
 Jenny Denton  
 Lynda Fanshaw  
 Sarah Fawcett  
 Leon Holmes  
 Rosene Kotz  
 Samantha Kotz  
 Barry Liddicoat  
 Viv Liddicoat  
 Simone Linder-Paton  
 Charles Mace  
 Anna McKenzie  
 Mike Painter  
 Alana Preece  
 John Ragless  
 Rosemary Rowe  
 Carolyn Scholz  
 Alice Shore  
 Robyn Smith  
 Rosie Trenerry  
 Yvonne Twining  
 John Weight  
 Ellen Wilden  
 Rae Winter  
 Lillian Wright



## 'AN ECLECTIC MIX'

This aptly named exhibition is a fabulous collection of unique creations which was a delight to 'stage' and is full of colourful discoveries for viewers to make.

The image above is just one of the mini vistas that greet visitors.

It combines **wall art** by John Weight, Leon Holmes and Rae Winter, displayed together with dramatic **ceramic urns** by Jenny Denton; **tactile timber** decorator items and homewares by woodturner Barry Liddicoat; **nuno-felted fashion accessories** and table runners by Alana Preece; along with a unique **felted scenic tote bag** from Robyn Smith.

We hope that you can discover all that is on offer in person soon.



**In recognition of outstanding service,  
Rose Rees has been awarded  
Life Membership of Top of the Torrens Gallery.**

Rose has been a member of the gallery for over 20 years, enthusiastically playing an active role in all facets of gallery life during that period including holding most Committee positions.

Always willing to help, Rose has been very generous with her time and talents and we thank her sincerely for her efforts in helping the TOTT become what it is today.

**Rose joins Leonie Holmes, Leon Holmes  
and Iris Foulkes on the TOTT Honour Roll.**



## Exciting opportunities for all in the 2024 exhibition calendar:

A **Makers** exhibition titled – ‘**Art in the Making**’ is in the planning stages for 2024 – opening on the **24<sup>th</sup> of March** and concluding on the **5<sup>th</sup> of May**, so if you are a maker of beautiful things, or your inspiration flows from out of the shed, we would love to see some of your creativity at the Gallery.

Also our **annual textiles and jewellery** exhibition ‘**Silver Threads & Golden Needles**’ will be staged from the **12<sup>th</sup> of May to the 30<sup>th</sup> of June**, so to all of the fashion creatives, please keep this one in mind.

**We will soon be asking for expressions of interest from both members and non-members to join us for these two exhibitions.**

**Members**, please also give some thought to your participation our **2024 SALA** exhibition ‘**Our Stories**’, as early-bird registration will be required to be completed by mid-April. Further details on how to register your interest for SALA will follow in the new year.

*Annette Dawson—Exhibition Co-ordinator*

## Artist of the month - November

### Lyn Stephens

---

The first of my creative work shown in public was on stage. It included some very different uniforms for a choir, hand painted kimonos for a production of 'The Mikado', and experience as apprentice to the make-up person for that production instead of singing in the chorus.

Performing and other things 'arty' went on-hold for about three decades while my career took precedence.



There was plenty of scope for creativity in my life as a pre-school teacher/director, but it wasn't 'doing my thing', or maybe strictly speaking, that should be 'my things'.

Since retiring I have been dabbling in pastels and acrylics, designing and making clothing, *(sewing, crocheting or knitting)* *(modern and medieval)*, and quilling *(cards, jewellery and pictures)*.



## Artist of the month - December

### Lillian Wright

---



I am originally from Norway but have been a permanent resident since migrating to Australia in 1976

- Married to an Australian, a mother of 4 children and a grandmother of 6
- Worked at RAH for 23 years as a Registered Nurse
- Started painting more seriously during Covid
- I am influenced by a Christian faith and hope to express joy and beauty in my work.

My interests are:

- Bright playful, colourful art
- Scandinavian design
- Family life, renovating and building
- Homemaking and interior decorating
- Craftwork, having previously made craft items for gift shops



# What's on at The Art Gallery of SA?

Besides the general collection – which is ever changing, there are many interesting exhibitions over the next few months.

[Full details <https://www.agsa.sa.gov.au/> ]



## Tarnanthi

AGSA's annual exhibition of contemporary Aboriginal and Torres Strait Islander artists from across the continent, *Tarnanthi*, will be open until 21 January 2024 so if you've not had a chance to see it, there is still time. It has been delighting visitors of all ages.

## Metamorphosis

Gallery 16 has been renovated and rehung using the theme 'Metamorphosis' and looking at themes of transformation and change in nature, the body and materials.

*'To everything there is a season' is a sentiment that acknowledges that everything in fact changes, passes and transitions from one state to another, from one stage to another. Bodies, materials and forms in flux abound in this display which brings together artists from over three thousand years to explore the nature of transformation.* <https://www.agsa.sa.gov.au/whats-on/exhibitions/metamorphosis/>

## Misty Mountain, Shining Moon: Japanese landscape envisioned

This beautiful exhibition on the beauty of Japanese landscapes is open in Galleries 19, 20 and 21 until March 2024. Find out more at <https://www.agsa.sa.gov.au/whats-on/exhibitions/misty-mountain-shining-moon-japanese-landscape-envisioned/>

## Exhibitions in 2024

Go to <https://www.agsa.sa.gov.au/whats-on/exhibitions/> to find out more about the exciting upcoming exhibition program for 2024. Here's a summary:

From 1 Mar to 2 Jun 2024 is the **18th Adelaide Biennial of Australian Art: Inner Sanctum** which offers an encounter with artists, poets and makers interested in the human condition. The Biennial unfolds across exhibitions, performances and talks that explore our engagement with the world and each other.

Brent Harris: **Surrender & Catch** runs from 6 Jul - 20 Oct 2024. This exhibition explores the work of senior contemporary Australian artist Brent Harris. Moving between figuration and abstraction, Harris deploys both humour and the grotesque to examine psychological subject matter and visualise his complex and contradictory feelings.

**Reimagining the Renaissance**, a ticketed exhibition, is open from 20 Jul 2024 – 13 Apr 2025.

*It draws from the Art Gallery of South Australia's collection of painting, sculpture, works on paper and decorative arts, alongside key loans from public and private collections. It will explore Northern and English Renaissance art together with that of the celebrated Italian masters viewing them within a broader art historical tradition and their continuing significance today.*

**SALA 2024** runs from 1 -31 August 2024. AGSA will display a selection of works by SALA focus artist for 2024, Julia Robinson, who draws on European folklore, mythology and gothic ritual, often focusing on the macabre or taboo elements of these histories.

**Radical Textiles**, from 23 Nov 2024 – 30 Mar 2025, is AGSA's second ticketed exhibition for the year.

*"From William Morris to Sonia Delaunay, **Radical Textiles** celebrates the cutting edge innovations, enduring traditions and bodies of shared knowledge that have been folded into fabric and cloth over the past 150 years. Showcasing the work of 100 makers, artists, designers and activists, this major exhibition draws on AGSA's international, Australian and First Nations collections of textiles and fashion, augmented by sculpture, painting, photography and the moving image."*

## Tuesday Talks

If you are in Adelaide on a Tuesday, why not come in for one of the Tuesday Talks 12.30pm – 1pm each week. To find out about the program go to <https://www.agsa.sa.gov.au/whats-on/event-calendar/>

## Facebook

You can read more about the Art Gallery of SA at <https://www.facebook.com/agsa.adelaide/>



Come see the range of  
fabulous gift ideas  
available now in the  
**TOTT Gift Shop**

Gift Vouchers also available

